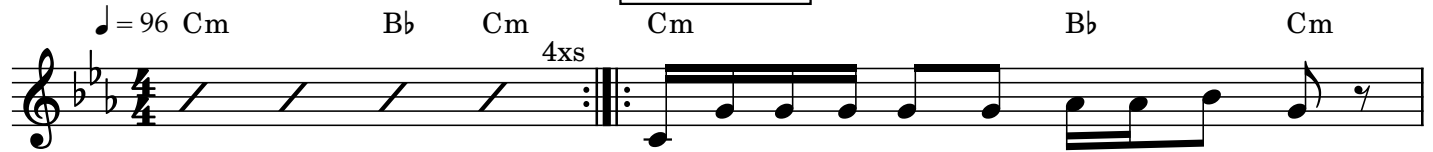
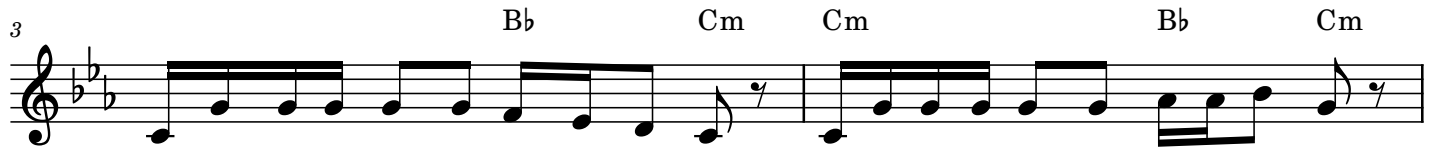


# Only One

## VERSES 1 & 2

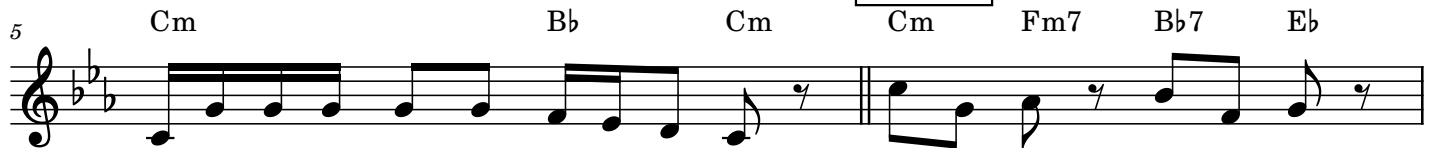


1. I am on - ly one, but still I am one.  
2. I am on - ly one, but still I am one,



I will not re-fuse to do what I can. I am on - ly one, but still I am one,  
can-not do it all, but I can do some. I am on - ly one, but still I am one.

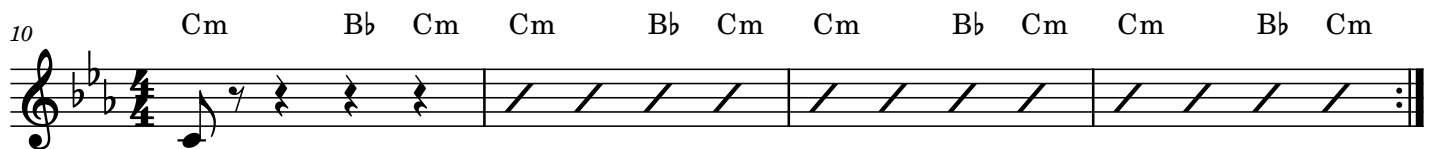
## CHORUS



can-not do it all, but I can do some. On - ly one, I'm still one.  
I will do the work un - til it is done.



I will do all that I can. On - ly one, I'm still one. I will do all that I can.

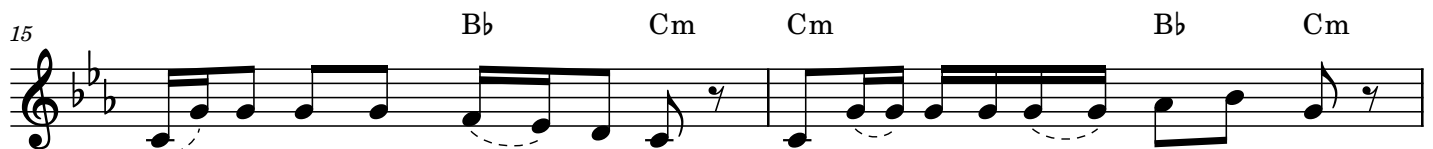


can.

## VERSES 3 & 4



3. Now we are to - ge - ther, now we are two.  
4. With one oth - er now we are three,



Look at how much more we can do. Co - op - er - a - tion is the path to take.  
build-ing a com - mu - ni - ty. Add one o - ther now we are four.

Words: John Sproule, b.1955 and Sheila White, b.1954

Music: Sheila White, b.1954

© 2021 Sheila White & John Sproule Sing Out Love  
expiration July 2028

### Arrangement Permissions

One-time Adaptation

New Arrangement OK

Seek permission to arrange

Look at the Sing Out Love "Permissions" section for further explanation

# Only One - 2

## CHORUS

17 Bb Cm Cm Fm7 Bb7 Eb

See the kind of diff-rence it makes. On - ly two, we are two.  
Each new one adds some - thing more. Some-thing more, some-thing more,

19 Ab Ddim G7 Cm Cm Fm7 Bb7 Eb

Look at how much more we can do. On - ly two, we are two.  
each new one adds some - thing more. Some-thing more, some-thing more,

21 Ab Ddim G7 1 Cm BbCm Cm BbCm Cm BbCm Cm BbCm

All it takes is me\_\_ and you.  
each new one adds some - thing\_\_

## 2. END

26 Cm Bb Cm

more. I am on - ly one, but still I am one.

27 Cm Bb Cm

I will not re - fuse to do what I can.

28 Bb Cm Bb Cm

I am on-ly one but still I am one, can-not do it all but I can do some.

30 Bb C

I am on-ly one, but still I am one.